

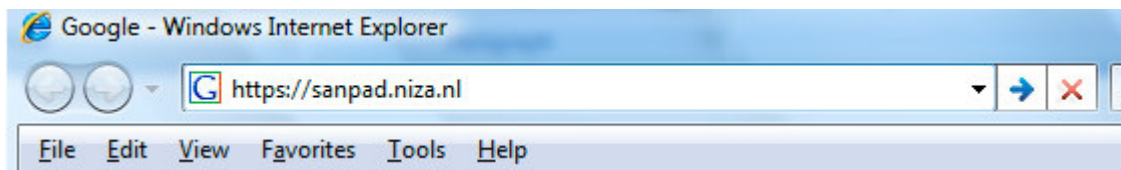
Installation

This brief instruction manual will assist you in installing the software necessary to use the database with the details from the study ‘Cooperating for Science’. To use the database you will have to install a Citrix Web Client. This is a one time only procedure to allow you to use this secured database environment.

To install the Citrix Web Client please follow the following instructions. Installation will only take about two minutes.

Open Internet Explorer and fill in the URL as is done in the example below:

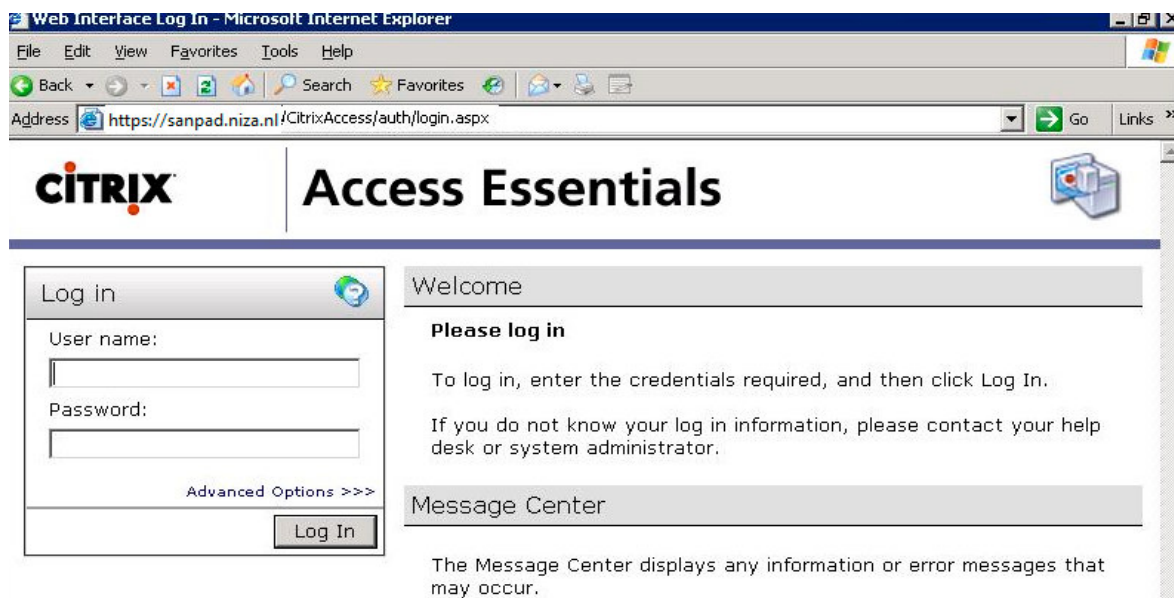
https://sanpad.niza.nl



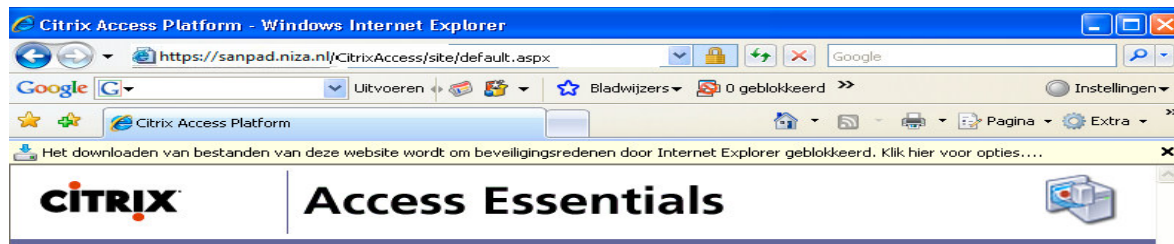
1. You will see the log in page for the Citrix Access Essentials server of SANPAD. You can fill in the user name and password as stated under the heading “welcome”:

User name: sanpad

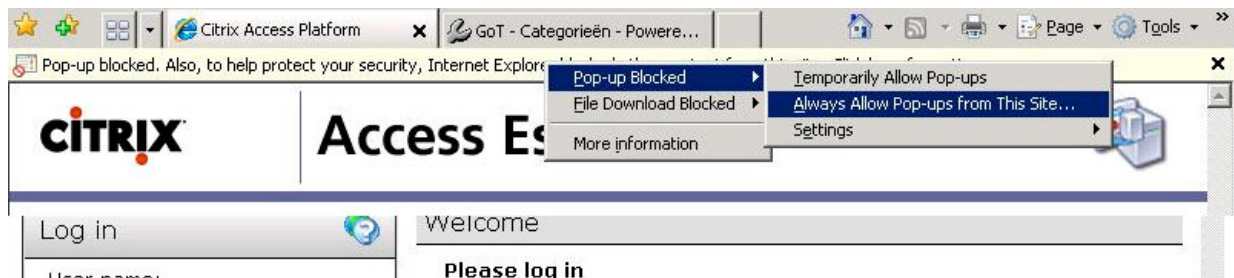
Password: partnership



2. Above the word “Citrix” a phrase “downloading files” now appears. You can leave this as it is. Please click on the “desk top” icon.



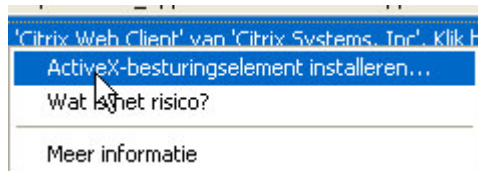
3. A new notification now appears above the word “Citrix”. Click on this notification. A menu appears. Click on “Always allow pop-ups from this site/Pop ups van deze site altijd toestaan.”
Then please click on Yes/Ja.



4. Proceed by clicking on the icon “partnership”. A new screen will now be opened. Click on the additional notification in the top of the screen.



5. Again a menu will be opened. Click on “ActiveX-besturingselement installeren/Install ActiveX-Component.”



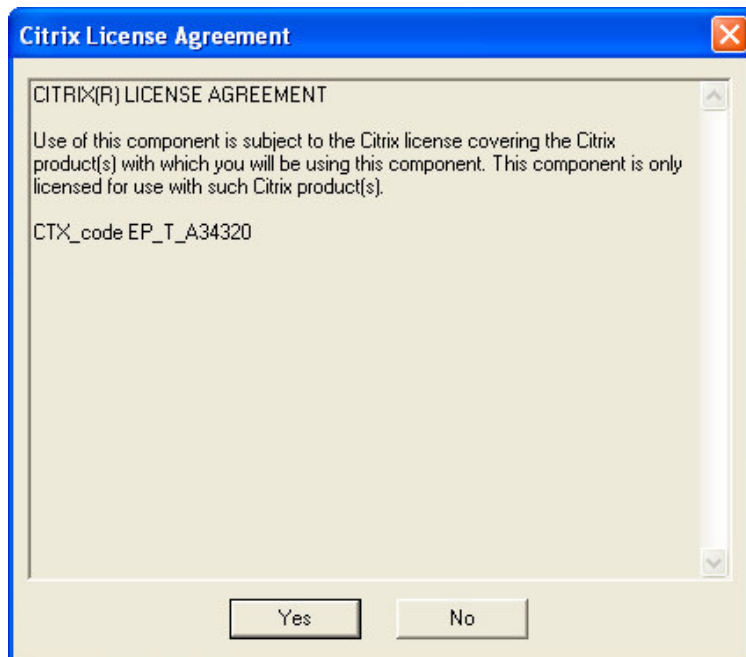
This is followed by the screen shown below. Choose “Install/Installeren”. It may take up to 2 minutes (depending on internet speed) for the screen to appear.





6. Click on “OK”.

7. Please confirm “Yes” as shown below.



8. Now you will be able to start the database in Perfect View software.