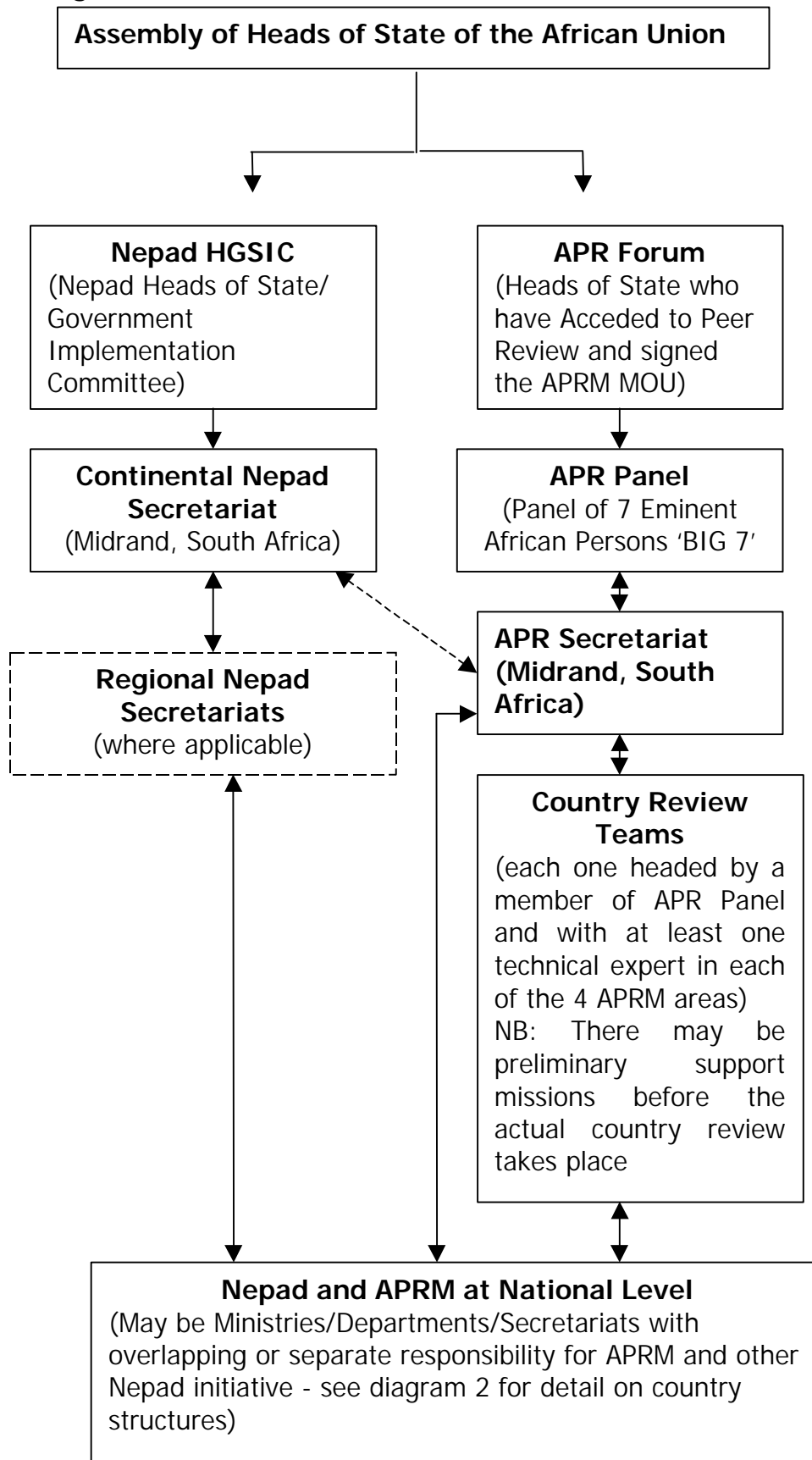
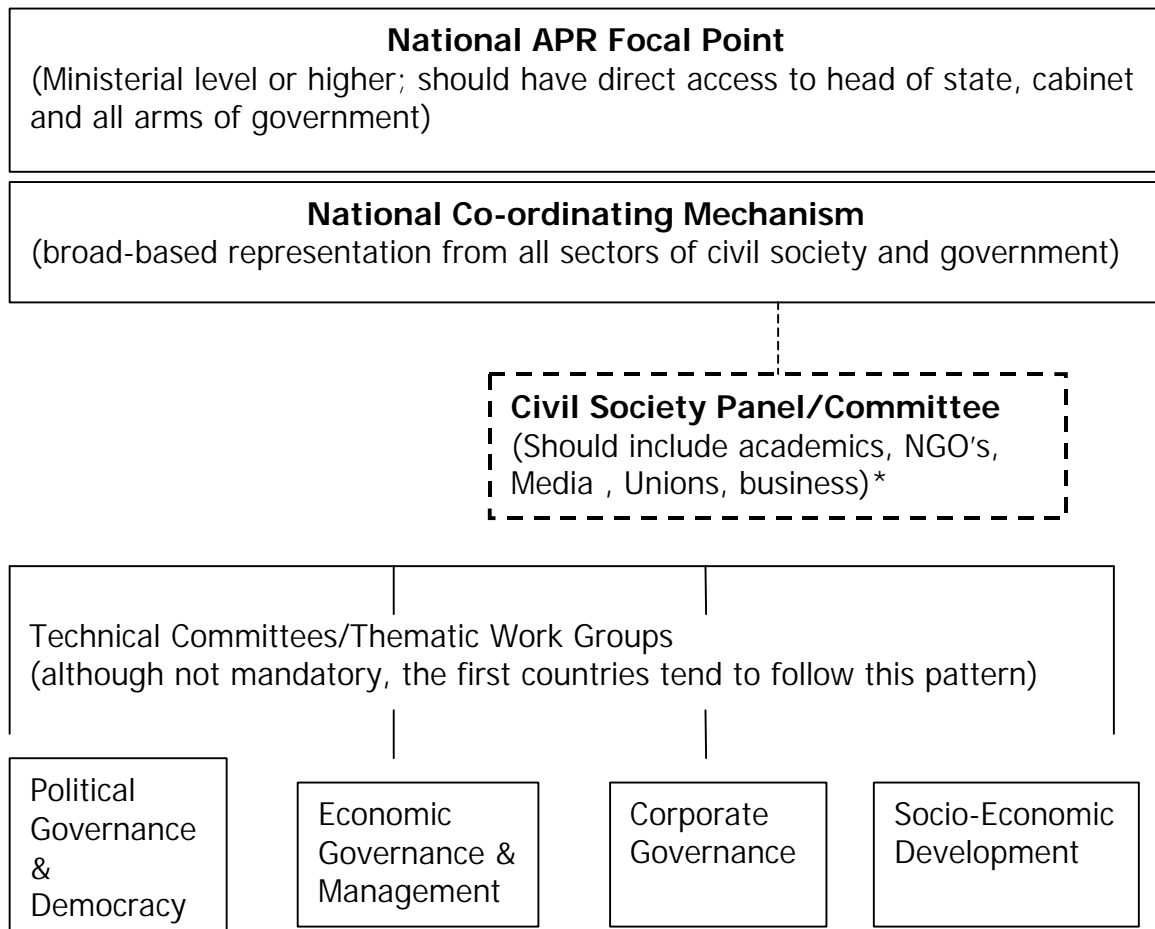


Diagram 1: The continental NEPAD and APRM structures*



*After Cilliers J, 2003

Diagram 2: The APRM structures at national level



* The Civil Society Panel shown is an option that some countries may incorporate into the National Co-ordinating Mechanism or as a substructure of the CO-ordinating Mechanism. The danger is that, in less democratic societies, the composition of this panel will be tightly controlled by government, effectively providing a barrier between civil society on the ground and the APR process instead of facilitating greater civil society involvement